



INNOVATIONS FOR LIVING®

VentSure®

Roof Ventilation System



Product Catalog

Ventilation System Story

Table of Contents

Ventilation System Story	2	Passive - Roof Vents - Turbine	7
Ventilation Benefits	3	Power - Roof Vents	8
How Ventilation Works	3	Solar - Roof Vents	8
VentSure® Rigid Roll Ridge Vents	4	Intake - Undereave & Soffit	9
VentSure® 4-Foot Strip Heat & Moisture Ridge Vents	5	Product Matrix	10 & 11
Passive - Roof Vents	6		

Ventilation System Story

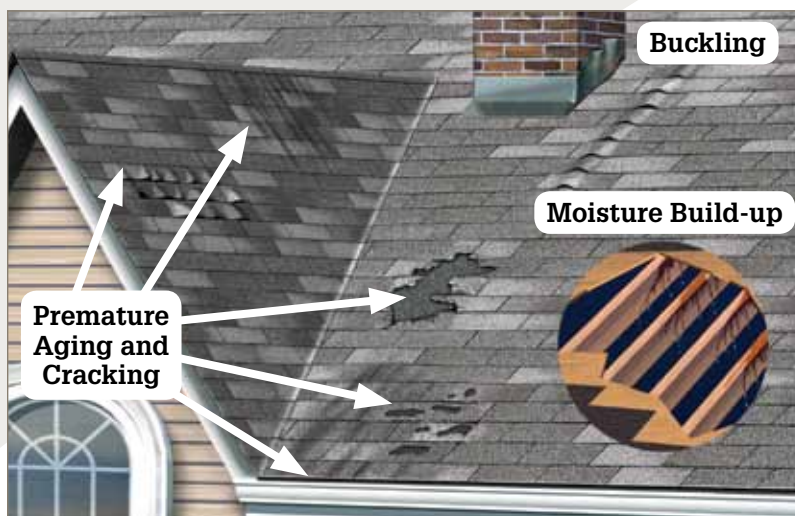
Your roof is a big investment and vital in protecting life's most valuable assets – your home, memorabilia and family.



To maximize the longevity of your roof, ensure proper ventilation for a healthier, more durable roof.

Typical household activities can wreak havoc on a roof and attic if proper roof ventilation is not provided:

- In the summer, heat build-up encourages the premature aging and cracking of wood and other roofing materials. Unwanted heat also can transfer back down into living areas—which reduces energy efficiency.
- In cold weather, warm air generated by laundry, showers, dish washing and cooking can linger in the house and leak into the attic, which may cause moisture build-up.



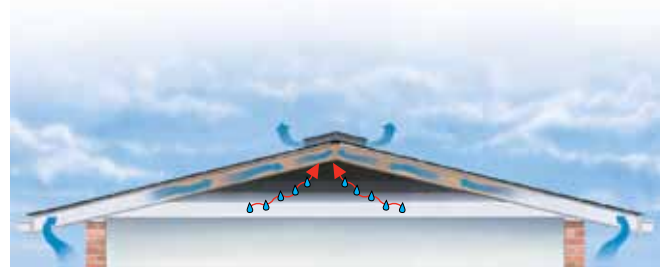
Ventilation Benefits

- Allows outside air to flow naturally upward and out of attic.
- Promotes a cooler, dryer attic.
- Helps prevent moisture from becoming trapped in insulation, structural wood, shingles and roof deck.
- Helps prevent rotting, mildew, drywall damage, peeling paint and warped siding.
- Provides year-round performance for consistent ventilation without energy consumption.

Ventilation is an important component of Owens Corning's™ Roofing System. These Owens Corning™ ventilation products will help prevent damage and premature aging caused by moisture in the winter and excess heat in the summer.

How Ventilation Works

In a balanced system, wind blowing over the ridge and roof vents creates negative pressure that draws the warmer air out of the attic. Replacement air then enters through the under-eave or soffit vents, bathes the underside of the roof, and exits at the ridge cap through ridge, roof or gable vents. Even without wind, the natural convection action of rising warm air maintains a continuous air flow along the underside of the roof. Ultimately, proper ventilation – along with attic insulation – helps maintain a comfortable temperature inside a home, increase energy efficiency, helps prevent moisture damage and contributes to the longevity of a roof.



Ventilation Product Options - Ridge or Roof Vents



VentSure® Ridge Vents

VentSure® Ridge Vents help provide proper ventilation underneath the roof deck to prevent overheating and moisture buildup.

- VentSure Rigid Roll Ridge Vents are covered by a 50-year limited warranty*
- VentSure 4-Foot Strip Heat & Moisture Ridge Vents are covered by a 20-year limited warranty*

VentSure® Ridge Vents offer the perfect combination of exceptional performance, streamlined styling and easy installation. As part of a balanced ventilation system, they help provide proper ventilation underneath the roof deck to prevent overheating and moisture buildup. VentSure® Ridge vents are available in your choice of a 20' corrugated plastic roll called VentSure® Rigid Roll, or a 4' externally baffled polypropylene product called VentSure® 4' Rigid Strip.

VentSure® Roof Vents

VentSure® Roof Vents allow hot, moist air to exit the attic to help prevent roof damage and premature aging.

* See actual warranty for complete details, limitations and requirements.



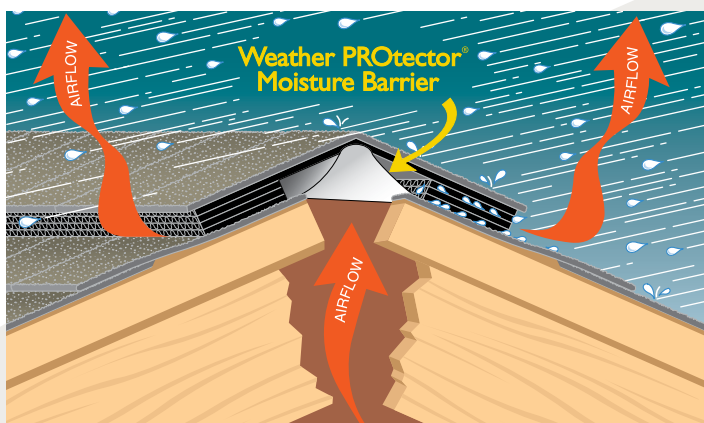
VentSure® Rigid Roll Ridge Vents

With Weather PROtector® Moisture Barrier



VentSure® Rigid Roll Ridge Vents are shingle-over, low-profile ridge vents designed to provide year-round protection and consistent ventilation in the attic, while achieving a natural, finished look for your roof. What's more, *VentSure* Rigid Roll Ridge Vents have a Weather PROtector® moisture barrier that helps provide added protection against weather infiltration.

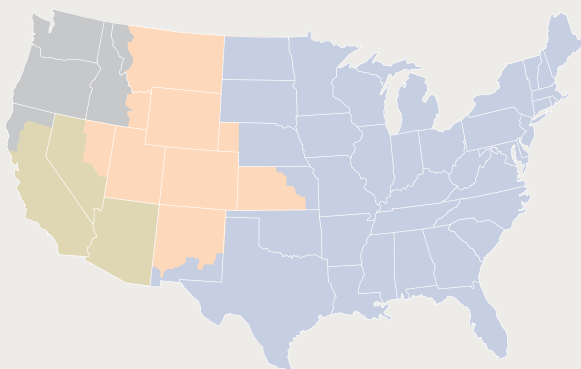
For an efficient roofing system, it's essential that the attic stay dry and cool. You can create this environment by using *VentSure* Rigid Roll Ridge Vents in combination with undereave soffit vents to allow the natural flow of outside air upward into the attic—and back out again. Without this system, moisture can reduce the effectiveness of your insulation, causing rotting or mildew on wood surfaces, drywall damage, peeling paint or warped siding. *VentSure* Rigid Roll is an essential component for a complete and healthy roofing system.



- Patented, durable corrugated plastic construction
- Low 5/8" profile for attractive ridge line
- Long-lasting 50-Year Limited Warranty*
- Regional availability in three different widths: 11¼", 9" and 7" (see map for details)
- Unique design adjusts to almost any roof pitch (2/12 to 20/12)
- Easy-to-handle 20' rolls; end caps are provided in each roll
- Net free vent area: 12.5 sq. in. per lineal ft.
- Meet or exceed requirements of all recognized national building codes for ventilation when properly installed with soffit or eave vents
- Passed all research and development tests for weather infiltration:
 - Testing performed at Architectural Testing Incorporated (ATI) in York, PA
 - Wind-driven rain—8.8" of rain at 110 MPH—PASSED
 - Snow infiltration—snow simulation at 35 and 70 MPH—PASSED with no infiltration
 - Meet ICC ESR 5417 standard

Product availability map

For assistance in identifying your Service Area, ask your contractor or call 1-800-GET-PINK®.



20' Rigid Roll

11¼" width			
9" width			
7" width			



* See actual warranty for complete details, limitations and requirements.

VentSure® 4-Foot Strip

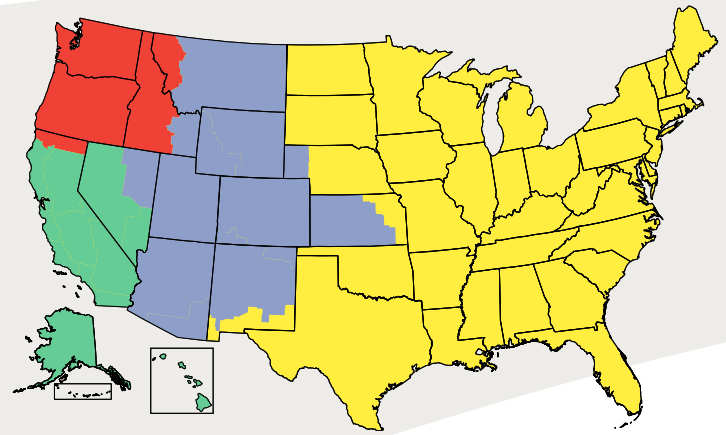
Heat & Moisture Ridge Vents



VentSure® 4-Foot Strip Ridge Vents Provide:

- **Exceptional weather protection** – The baffle and *Weather PROtector* moisture barrier help protect against weather infiltration. Unique flat baffle design improves airflow by keeping leaves, pine needles or similar debris from impacting the performance of the vent.
- **Maximum versatility** – Patent-pending corrugated ridge design and interlocking feature allow for additional flexibility and strength to accommodate virtually any roof pitch, resulting in a strong uniform ridgeline.
- **Increased roof durability** – Proper ventilation helps maximize the performance of the entire roof system.

Product availability map



12" without Weather PROtector® Moisture Barrier*				
12" with Weather PROtector® Moisture Barrier*				
10" with Weather PROtector® Moisture Barrier				
8" with Weather PROtector® Moisture Barrier				

*See alternative product literature for product details.

	12" vent	10" vent	8" vent
Net Free Vent Area	20 sq in. per lineal ft.	18 sq in. per lineal ft.	18 sq in. per lineal ft.
Overall Width	15"	13.28"	11.43"
Length	48"	48"	48"
Height	1"	1"	1"
Shingle-Over Width	12"	10"	8"
Allowable Roof Pitch**	3/12 to 16/12	3/12 to 16/12	3/12 to 16/12

**see installation instruction for complete details

External baffle design helps deflect wind-driven rain and snow

Bends to create a more uniform ridgeline

Optional filter provides added protection during wind-driven rain and snowstorms

Helps avoid the collection of pine needles, leaves or similar debris

Allows heat and moisture to escape the attic



Works with under-eave vents to keep fresh air flowing through the roof

Passive - Roof Vents



Item	Model Name	Construction Material	Colors	Base	Opening	Net Free Vent Area	Features
A	VentSure® Metal Dome with Screen	Galvanized Steel	Mill, W. Grey, Brown, Black	25" x 25"	15" diameter	144 sq. in.	<ul style="list-style-type: none"> Expanded steel mesh grill protects against rodents and birds Suitable for up to 8/12 pitch
B	VentSure® Plastic Slant Back Roof Vent with Screen	Polypropylene Plastic	W. Grey, Brown, Black, Cedar, White	17" x 18"	9" x 9"	55 sq. in.	<ul style="list-style-type: none"> Suitable for up to 12/12 pitch Durable polypropylene that resists corrosion, cracking and discoloration Fully screened to protect against rodents and birds
C	VentSure® Metal Square Hood Roof Vent, High Stack	Aluminum / Galvanized	Mill, W. Grey, Brown, Black	16.5" x 17.5"	8" x 8"	51 sq. in.	<ul style="list-style-type: none"> Suitable for up to 12/12 pitch Heavy duty aluminum and steel construction
D	VentSure® Metal Slant Back Roof Vent with Exterior Louver	Aluminum / Galvanized	Mill, W. Grey, Brown, Black	16" x 20"	8" diameter	51 sq. in.	<ul style="list-style-type: none"> Suitable for up to 12/12 pitch Heavy duty aluminum and steel construction
E	VentSure® Low Profile Slant Back Vent with Exterior Louver	Galvanized Steel	Black, White, Mill, Brown, Light Gray, Dark Gray	32" x 23"	11" x 11"	72 sq. in.	<ul style="list-style-type: none"> Low profile for enhanced aesthetics Works year-round for consistent ventilation without energy consumption Available with extended flange, which is 36" x 28"

Only in Plastic



Passive - Roof Vents - Turbine

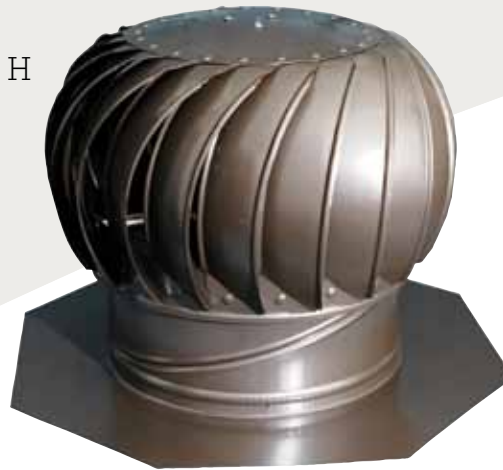
F



G



H

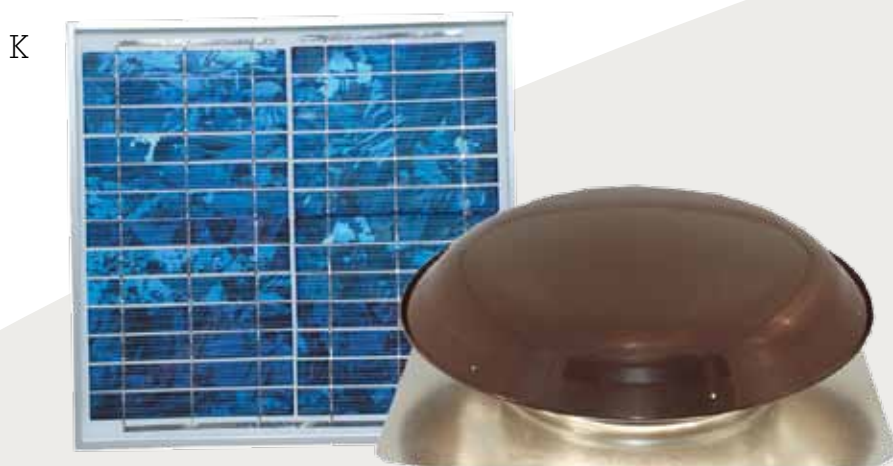


ATTIC SIZE IN SQ. FT. Tamano de desvan en pies cuadrado	TURBINES REQUIRED Turbinas requeridas		REQUIRED SQ. IN. INTAKE VENTS Abertura recomendada en pulgadas cuadro
	12"	14"	
1000	2	2	240
1500	3	2	360
2000	4	3	480
2500	5	4	600
3000	6	5	720
4000	8	6	960

Item	Model Name	Construction Material	Colors	Size	Base	Opening	Features
F	VentSure® Internally Braced Premium Turbine	Aluminum / Galvanized	Mill, W. Grey, Brown, Black	12" size	16"	12"	<ul style="list-style-type: none"> Promotes effective air movement to maximize roof performance High performance aluminum construction for long-lasting durability Sealed and lubricated stainless steel ball bearings Engineered bracing system for exceptional wind protection Available in both a 12" and 14"
				14" size	18"	14"	
G	VentSure® Externally Braced Premium Turbine	Aluminum / Galvanized	Mill, W. Grey, Brown, Black	12" size	16"	12"	<ul style="list-style-type: none"> Promotes effective air movement to maximize roof performance High performance aluminum construction for long-lasting durability Sealed and lubricated stainless steel ball bearings Engineered bracing system for exceptional wind protection Available in 12"
H	VentSure® Internally Braced Standard Turbine	Aluminum / Galvanized	12" - Mill, Black, Brown	12" size	16"	12"	<ul style="list-style-type: none"> Promotes effective air movement to maximize roof performance Heavy duty galvanized construction Easy to install Available in both a 12" and 14"
			14" - Mill	14" size	18"	14"	



Power - Roof Vents



Item	Model Name	Construction Material	Colors	Base	Opening	Features
I	VentSure® 1400 CFM Power Roof Vent	Aluminum / Galvanized	Mill, W. Grey, Brown, Black	25" x 25"	15"	<ul style="list-style-type: none"> ▪ Suitable for up to 8/12 ▪ Ideal for 2000 square foot attic ▪ Energy Efficient 4.5 Amp Motor ▪ Adjustable thermostat and humidistat
J	VentSure® 1080 CFM Power Roof Vent	Aluminum / Galvanized	Mill, W. Grey, Brown, Black	25" x 25"	15"	<ul style="list-style-type: none"> ▪ Suitable for up to 8/12 ▪ Ideal for 1600 square foot attic ▪ 2.6 Amp Motor ▪ Adjustable thermostat and humidistat
K	VentSure® 1000 CFM Solar Powered Roof Vent	Aluminum / Galvanized	Mill, W. Grey, Brown, Black	25" x 25"	15"	<ul style="list-style-type: none"> ▪ Suitable for up to 8/12 ▪ Ideal for up to 1550 square foot attic ▪ 10 watt, 17 volt DC motor ▪ Includes a high-impact tempered solar cell with a 25 foot power cord

Precautionary Note:

It is critical that the right amount of inlet area ventilation is installed and the attic ceiling is adequately sealed to prevent pulling air from the conditioned space and for proper operation of the power vent. For additional information please refer to our installation instructions.





VentSure® Aluminum Undereave Intake Vent

- All aluminum construction for additional durability
- Fully screened for protection against insects
- Pre-drilled holes for easy installation
- Colors: Mill & White
- Net free vent area:
 - 4x16 = 16.34 sq inches
 - 6x16 = 27.23 sq inches
 - 8x16 = 38.12 sq inches



VentSure® Round Mini Soffit Vents

- Ideal for smaller soffit panels
- Available in 2", 3", & 4" round
- All aluminum construction for additional durability
- Colors: Mill
- Net free vent area:
 - 2" = .637 sq inches
 - 3" = 1.36 sq inches
 - 4" = 2.43 sq inches



VentSure® 8-foot Continuous Soffit Vent

- Available in 8' lengths
- Colors: White
- Net free vent area: 37.47 sq inches



Raft-R-Mate® Attic Rafter Vents

- Assist in the constant flow of fresh air from soffit vent to attic
- Aid in greatly increasing attic ventilation in all seasons for comfort and prevention of roof damage
- Are made of extruded polystyrene so they'll stay in place over time and will not rot or deteriorate
- Feature excellent break-resistance and lightweight rigidity for ease of installation
- Fit 24" rafters or snap in half for 16" or 12" rafter spacing
- Net free vent area: 22.3 sq inches



Product Matrix

VentSure® Ridge Vents

NOTE: Available from Owens Corning Roofing plants. Minimum order quantity is 1 pallet. Maximum order quantity of 10 pallets. Some vents have regional availability, please contact your sales manager for availability in your region.

Rigid Roll						
Model Name	Length	Color	Material Code	Short Code	Rolls/PL	Pallets/TL
11.25" Rigid Roll with WeatherPROtector® moisture barrier	20'	Black	337250	RR02	36	52
11.25" Rigid Roll with WeatherPROtector® moisture barrier w/ Nails	20'	Black	425321	RR06	36	52
9" Rigid Roll with WeatherPROtector® moisture barrier	20'	Black	337255	RR04	45	52
7" Rigid Roll with WeatherPROtector® moisture barrier	20'	Black	337253	RR03	54	52
Rigid Strip						
Model Name	Width	Color	Material Code	Short Code	PC/ Carton	Cartons/ PL
4' Strip Heat and Moisture vent w/ Nails	12"	Black	489778	VS4N	10	12
4' Strip Heat and Moisture vent with WeatherPROtector® moisture barrier	12"	Black	542533	VS4W	10	12
4' Strip Heat and Moisture vent with WeatherPROtector® moisture barrier	10"	Black	562959	VS4TW	10	12
Class A Fire 4' Strip Heat and Moisture vent with WeatherPROtector® moisture barrier	10"	Black	562961	VS4TWA	10	12
4' Strip Heat and Moisture vent with WeatherPROtector® moisture barrier	8"	Black	562958	VS4EW	10	12
Class A Fire 4' Strip Heat and Moisture vent with WeatherPROtector® moisture barrier	8"	Black	562960	VS4EWA	10	12

VentSure® Roof Vents

NOTE: \$1500 minimum order for freight to be included. Additional freight charges will be included for orders less than \$1500

Slant Back						
Model Name	Construction	Color	Material Code	Short Code	PC/ Carton	Cartons/ PL
Slant Back	Aluminum	Mill	525825	ALSBML	6	20
		Brown	525826	ALSBBR	6	20
		Black	525827	ALSBBL	6	20
		Weathered Grey	525828	ALSBWG	6	20
Slant Back	Galvanized	Mill	525829	ALSBML	6	20
		Brown	525831	ALSBBR	6	20
		Black	525832	ALSBBL	6	20
		Weathered Grey	525843	ALSBWG	6	20
Slant Back	Polypropylene	Grey	525815	PLSBGR	6	24
		Black	525816	PLSBBL	6	24
		Brown	525818	PLSBBR	6	24
		Weathered Grey	525819	PLSBWG	6	24
		Cedar	525820	PLSBCD	6	24
		White	525821	PLSBWH	6	24
Dome						
Model Name	Construction	Color	Material Code	Short Code	PC/ Carton	Cartons/ PL
Metal Dome	Galvanized	Mill	525811	GVDMMML	1	30
		Brown	525812	GVDMBR	1	30
		Black	525813	GVDMBL	1	30
		Weathered Grey	525814	GVDMWG	1	30
Square Top						
Model Name	Construction	Color	Material Code	Short Code	PC/ Carton	Cartons/ PL
Square Top	Aluminum	Mill	525844	ALSTML	6	20
		Brown	525845	ALSTBR	6	20
		Black	525846	ALSTBL	6	20
		Weathered Grey	525847	ALSTWG	6	20
Square Top	Galvanized	Mill	525848	GVSTML	6	20
		Brown	525849	GVSTBR	6	20
		Black	525850	GVSTBL	6	20
		Weathered Grey	530646	GVSTWG	6	20


Product Matrix

Turbine Vents						
Model Name	Construction	Color	Material Code	Short Code	PC/ Carton	Cartons/ PL
Premium 12" Turbine - Internally Braced	Aluminum	Mill	562393	RVTB11	1	20
		Black	562394	RVTB12	1	20
		Brown	562395	RVTB13	1	20
		Weathered Grey	562396	RVTB14	1	20
Premium 12" Turbine - Externally Braced	Aluminum	Mill	562397	RVTB21	1	16
		Black	562398	RVTB22	1	16
		Brown	562399	RVTB23	1	16
		Weathered Grey	562400	RVTB24	1	16
Premium 14" Turbine - Internally braced	Aluminum	Mill	562401	RVTB31	1	20
		Black	562402	RVTB32	1	20
		Brown	562403	RVTB33	1	20
		Weathered Grey	562404	RVTB34	1	20
Standard 12" Turbine - Internally braced	Galvanized	Mill	562405	RVTB41	1	24
		Black	562406	RVTB42	1	24
		Brown	562407	RVTB43	1	24
Standard 14" Turbine - Internally braced	Galvanized	Mill	562408	RVTB51	1	20
Intake Vents						
Model Name	Construction	Color	Material Code	Short Code	PC/ Carton	Cartons/ PL
4" X 16" Undereave Vent	Aluminum	Mill	562425	RVEV41	24	144
		Brown	562426	RVEV43	24	144
		White	562427	RVEV45	24	144
6" X 16" Undereave Vent	Aluminum	Mill	562428	RVEV61	24	144
		Brown	562429	RVEV63	24	144
		White	562430	RVEV65	24	144
8" X 16" Undereave Vent	Aluminum	Mill	562431	RVEV81	24	144
		Brown	562432	RVEV83	24	144
		White	562433	RVEV85	24	144
96" Continuous Soffit Vent	Aluminum	Mill	562434	RVEV91	50	80
		Brown	562435	RVEV93	50	80
		White	562436	RVEV95	50	80
2" Round Mini Soffit Vents	Aluminum	Mill	562437	RVEV32	72	144
3" Round Mini Soffit Vents	Aluminum	Mill	562438	RVEV33	36	144
4" Round Mini Soffit Vents	Aluminum	Mill	562439	RVEV34	36	72
22.5" x 48" Raft-R-Mate®	Extruded Polystyrene	Pink	510266 900 PC/ PL BULK; 459263 75/CT (UPS)**	10 UM for pallet; 12 UM for UPS**	75**	12**
** Note: Ships separately. Cannot be combined with other vents.						

Powered Roof Vents						
Model Name	Construction	Color	Material Code	Short Code	PC/ Carton	Cartons/ PL
1400 CFM Roof Vent w/ Energy Efficient Motor	Aluminum	Mill	562413	RVPR21	1	30
		Black	562414	RVPR22	1	30
		Brown	562415	RVPR23	1	30
		Weathered Grey	562416	RVPR24	1	30
1400 CFM Roof Vent w/ Energy Efficient Motor	Galvanized	Mill	562409	RVPR11	1	30
		Black	562410	RVPR12	1	30
		Brown	562411	RVPR13	1	30
		Weathered Grey	562412	RVPR14	1	30
1080 CFM Roof Vent	Aluminum	Mill	562421	RVPR41	1	30
		Black	562422	RVPR42	1	30
		Brown	562423	RVPR43	1	30
		Weathered Grey	562424	RVPR44	1	30
1080 CFM Roof Vent	Galvanized	Mill	562417	RVPR31	1	30
		Black	562418	RVPR32	1	30
		Brown	562419	RVPR33	1	30
		Weathered Grey	562420	RVPR34	1	30
Solar Powered Roof Vents						
Model Name	Construction	Color	Material Code	Short Code	PC/ Carton	Cartons/ PL
1000 CFM Roof Vent w/ 12.6 watt solar panel	Aluminum	Mill	562444	RVSL21	1	30
		Black	562445	RVSL22	1	30
		Brown	562446	RVSL23	1	30
		Weathered Grey	562447	RVSL24	1	30
1000 CFM Roof Vent w/ 12.6 watt solar panel	Galvanized	Mill	562440	RVSL11	1	30
		Black	562441	RVSL12	1	30
		Brown	562442	RVSL13	1	30
		Weathered Grey	562443	RVSL14	1	30
Low Profile Slant Back Vent						
NOTE: Currently available in Florida and California only. Please contact your local Sales Manager for price and availability in other regions. No minimum order quantity on the Low Profile Slant Back vents						
Model Name	Construction	Color	Material Code	Short Code	PC/ Carton	Cartons/ PL
Low Profile Slant Back	Aluminum	Mill	413821	VS73	10	12
		Black	413822	VS71	10	12
		White	414043	VS72	10	12
		Brown	414046	VS74	10	12
		Light Gray	414048	VS75	10	12
		Dark Gray	414049	VS76	10	12
Low Profile Slant Back Extended Flange- CA ONLY	Aluminum	Mill	428744	VS81	10	8
		Black	428745	VS82	10	8
		White	428746	VS83	10	8
		Brown	428747	VS84	10	8
		Light Gray	428748	VS85	10	8
		Dark Gray	428749	VS86	10	8

The essentials for a healthy roofing system.

It takes more than just shingles to create a high-performance roof. It requires a system of products working together. Owens Corning™ Roofing Essentials™ Accessory Products work with our shingles to make up a roofing system that helps provide maximum durability for your roof. And the most protection for your home.

- a VentSure® Ventilation Products.** Help protect a roof from premature failure by helping remove heat and moisture from the attic. 
- b Pink Fiberglas™ Blown-In Insulation.** Tiny air pockets trapped in the insulation resist the passage of heat flow.
- c Owens Corning™ Hip & Ridge Shingles.** Help protect the ridge vent and add an attractive, finished look to a roof's hips and ridges.
- d Owens Corning™ Shingles.** Add durable beauty to a home. Shingles are the first line of defense against the elements.
- e Owens Corning™ Underlayment Products.** Add an extra layer of protection between the shingles and the roof deck to help prevent damage from wind-driven rain.
- f WeatherLock® Self-Sealing Ice & Water Barrier Products.** Help guard vulnerable areas where water can do the most damage to a roof: eaves, valleys, dormers and skylights.
- g Owens Corning™ Starter Shingle Products.** The first step in the proper installation of shingles.
- h RapidFlow® Gutter Drainage Protection.** Keeps leaves and other debris from clogging gutters, while allowing water to flow freely off of the roof and through gutters.
- i Undereave Ventilation Products.** Help prevent moisture buildup in the attic by working with ridge vents to keep air moving.



- As a home's energy efficiency increases with a complete Owens Corning™ Roofing System—including proper ventilation and insulation—its carbon footprint decreases.
- Ventilation and insulation prevent heat and moisture from building up in the attic which can lead to premature roof damage. This maximizes the performance of the shingles and, ultimately, the home's durability.

Visit www.roofing.owenscorning.com for more information.



INNOVATIONS FOR LIVING®

OWENS CORNING ROOFING AND ASPHALT, LLC
ONE OWENS CORNING PARKWAY
TOLEDO, OHIO, USA 43659

1-800-GET-PINK®
www.roofing.owenscorning.com

Pub. No. 10012271. Printed in U.S.A. August 2010. THE PINK PANTHER™ & © 1964–2010 Metro-Goldwyn-Mayer Studios Inc. All Rights Reserved. The color PINK is a registered trademark of Owens Corning. ©2010 Owens Corning.